

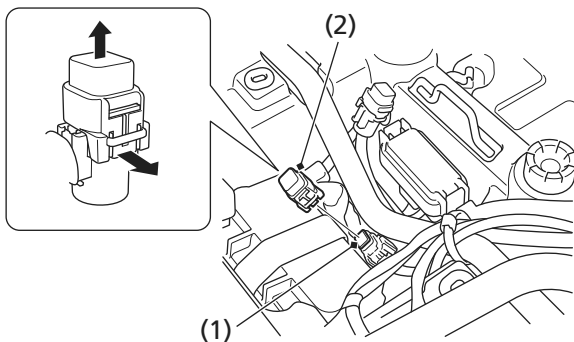
# If a Fuse Blows

---

## PS (Electric Power Steering) Fuse Access (TRX500FM6/FM7)

1. Turn the ignition switch to OFF (O) before checking the fuse.
2. Remove the seat ([page 120](#)).
3. Remove the rear fender cover ([page 121](#)).
4. To access the PS fuse (1), remove the fuse cover (2).  
If the PS fuse is blown, install the spare fuse ([page 119](#)).
5. Install the fuse cover.
6. Install the rear fender cover.
7. Install the seat.

### UNDER REAR FENDER COVER



(1) PS fuse

(2) fuse cover