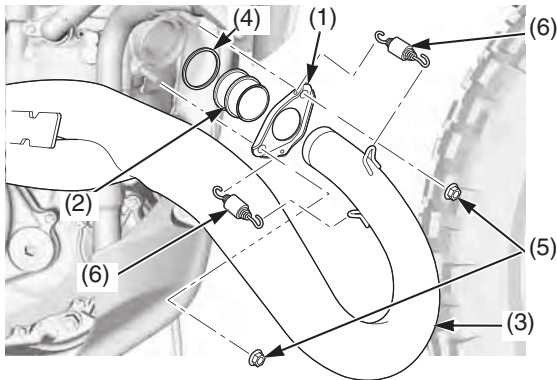


(CRF450RWE)

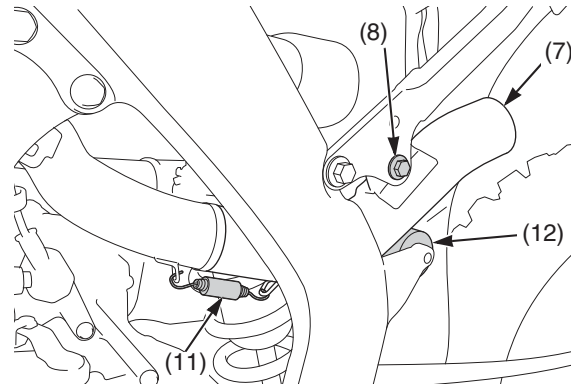
1. Install the exhaust pipe flange (1) and sleeve (2) to the exhaust pipe (3) if removed.
2. Install a new exhaust pipe gasket (4), exhaust pipe and exhaust pipe joint nuts (5) but do not tighten the nut yet.
3. Set the exhaust springs B (6) to the exhaust pipe flange.



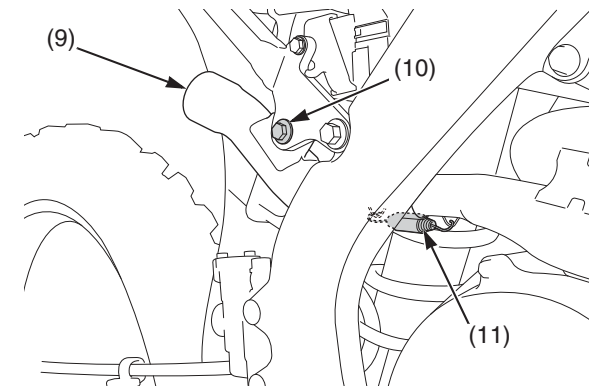
- (1) exhaust pipe flange
- (2) sleeve
- (3) exhaust pipe
- (4) exhaust pipe gasket (new)
- (5) exhaust pipe joint nuts
- (6) exhaust springs B

4. Attach the left muffler joint pipe (7) and install the left muffler mounting A bolt (8) but do not tighten the bolt yet.
5. Attach the right muffler joint pipe (9) and install the right muffler mounting A bolt (10) but do not tighten the bolt yet.
6. Install the left and right muffler but do not tighten the bolts yet (page 129).
7. Tighten the exhaust pipe joint nuts to the specified torque:  
15 lbf·ft (20 N·m, 2.0 kgf·m)
8. Tighten the right and left muffler mounting A bolts to the specified torque:  
19 lbf·ft (26 N·m, 2.7 kgf·m)
9. Tighten the right and left muffler mounting B bolts to the specified torque:  
19 lbf·ft (26 N·m, 2.7 kgf·m)

10. Install the left and right exhaust springs A (11).
11. Install the upper drive chain roller (12) (page 123).



- (7) left muffler joint pipe
- (8) left muffler mounting A bolt
- (11) left exhaust springs A
- (12) upper drive chain roller



- (9) right muffler joint pipe
- (10) right muffler mounting A bolt
- (11) right exhaust springs A

12. Install the exhaust spring B to the exhaust pipe.
13. Install the air cleaner housing covers and side covers (page 129).
14. Install the seat (page 34).