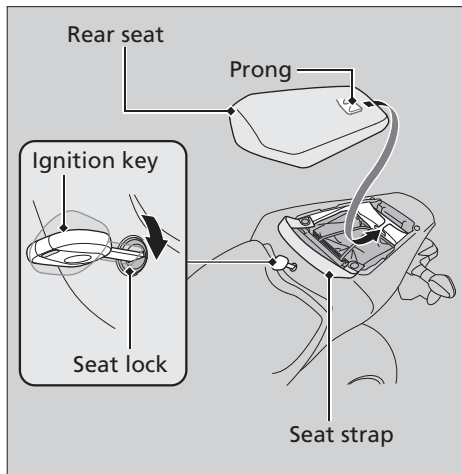


Rear Seat



Removal

1. Move the seat strap forward.
2. Insert the ignition key into the seat lock.
3. Turn it clockwise, then pull the rear seat forward and up.

Installation

1. Insert the prong into the seat hook.
 2. Push down on the front of the rear seat.
Make sure that the seat is locked securely in position to pull it up lightly.
- The seat locks automatically when closed. Take care not to lock your key in the compartment under the rear seat.