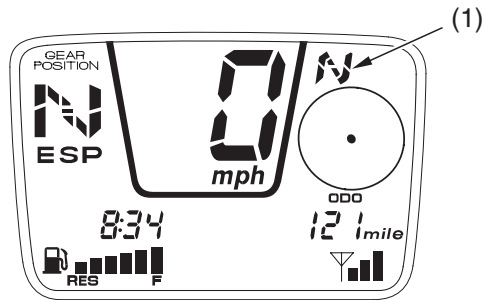




Compass Direction Indicator

The compass direction indicator does not appear when the system is in the GPS mode. Instead, you will see the direction to waypoint arrow — as long as your ATV is moving (one mph or faster).

The compass direction indicator (1) shows the heading of your ATV when the system is in the odometer or tripmeter mode — as long as your ATV is moving (one mph or faster). Your ATV must be moving to allow GPSscape to calculate your present direction compared to your previous location.



(1) compass direction indicator

The compass direction indicator displays 8 possible directions:

N	North	NW	Northwest
S	South	NE	Northeast
E	East	SW	Southwest
W	West	SE	Southeast