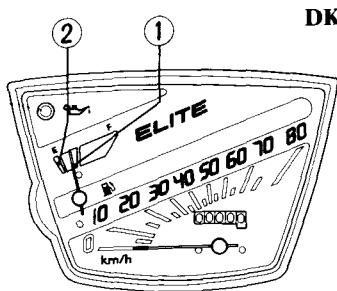


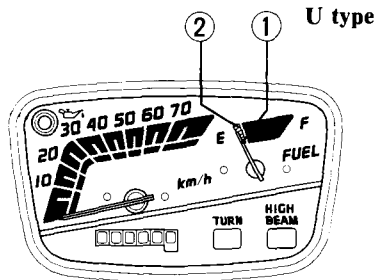
Fuel Gauge

The fuel gauge (1) shows the approximate fuel supply available. At F (Full) there are 2.9 ℓ (0.77 US gal, 0.64 Imp gal) including the reserve supply.

When the gauge needle enters the red band (2), fuel will be low and you should refill the tank as soon as possible. The amount of fuel left in the tank when the needle enters the red band is approximately 0.8 ℓ (0.21 US gal, 0.18 Imp gal).



DK type



U type

(1) Fuel gauge

(2) Red band